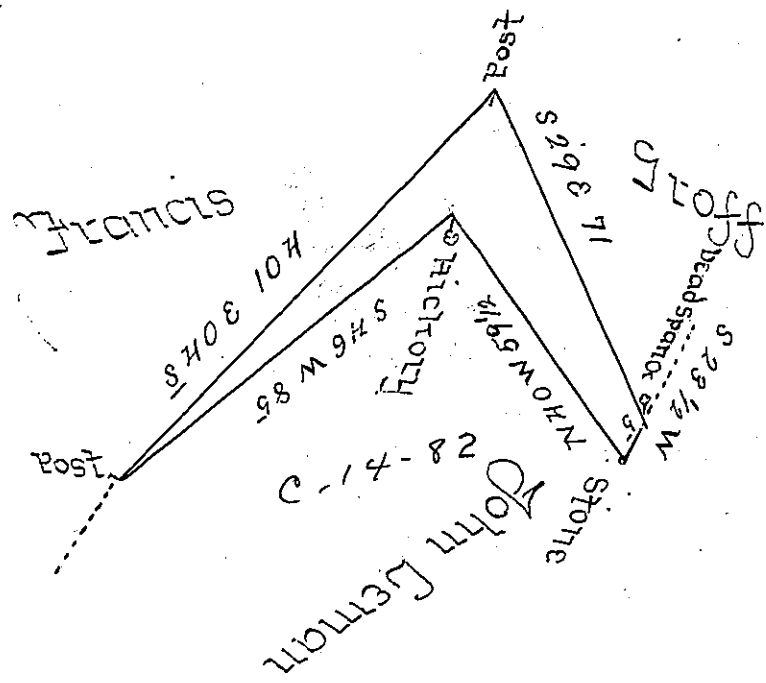


C-82

19

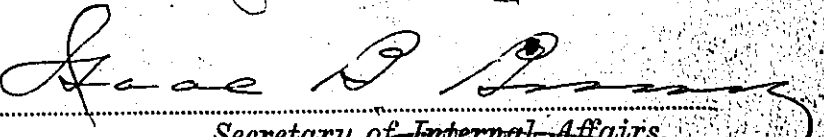


A Draught of a Tract of Land Situate in $\frac{17}{17}$ Rapho -
 Township Lancaster County Containing Seven Acres
 and one Hundred and Twenty Perches of Land and
 Allowance of Six Per Cent Surveyed for Francis Groff
 by his Warrant dated the fifteenth day of May 1798 -
 - the 27th day of September A.D. 1805 by

Saml. Ensminger J.S.
 Henry Ream J.S.

To Samuel Cochran Esquire,
 Surveyor General of Pennsylv^a

IN TESTIMONY that the above is a copy of the original remaining on file in
 the Department of Internal Affairs of Pennsylvania, made
 conformably to an Act of Assembly approved the 16th day of
 February, 1833, I have hereunto set my Hand and caused
 the Seal of said Department to be affixed at Harrisburg,
 this twenty sixth day of January 1905.


 Secretary of Internal Affairs.